

## RF Products Guide



# Telecom and Enterprise Products

## OSP AND PREMISE DS3 PRODUCTS

### DDPM-2GT

- Pass through BNC 75 ohm jacks with monitor ports
- Fully lightning protected for secure grounding
- Enabling point of termination (POT) handoff points with test ports
- Rack mounted configurations, both vertical and horizontal layouts
- Available in low cost premise version without gas tube protection



### TMM-2

- In-line test and monitoring module
- For central offices with remote-provisioned network equipment
- Enables quick access for bit error rate testing



### M4Flex™ Edge-of Network Connectivity

- Subpanel system for flexible mixed wireline termination/ routing
- Subpanel options:
  - Universal subpanel with BNC, F, RJ45, RCA, and SC keystone inserts
  - DDM-2 for wiring closet deployment of DS3 line rates
  - DDPM-2 with gas-tube protection for OSP deployment
- Panel enclosure options:
  - Lockable wall-mount enclosure – holds 4 subpanels
  - L-bracket for interior wiring closet – holds 3 subpanels
  - 19" or 23" 1RU rack panel, holds 3-4 subpanels

## CARRIER CLASS PCB-MOUNTED JACKS

### UCBBJR29

- Best case telco electricals for minimal return loss characteristics
- Carrier Class design



### UCBJE20

- Best case RF performance for high frequency
- Available in various PCB thicknesses

### UCBJ224

- Workhorse design for backplane coaxial distribution panels popular in OC48 and higher systems
- Available in nickel or solderable gold finish



### M-BNC jack series

- Straight and right angle available in M-BNC format
- Available in nickel or solderable gold finish
- Same footprint as SMB series

# Telecom and Enterprise Products

## CENTRAL OFFICE



### BNC straight, 45 degree and right angle plugs

- Crimp/crimp design for field terminations
- Common installer tooling and training
- Carrier Class reliability
- Telco grade – NEBS certified to level 3 type 2
- The industry standard for central office DS3 lines
- Now with new notch visual indicating engagement feature



### M-BNC plug, straight and right angle

- All the same materials and design of full size Trompeter BNC
- Same installation tooling and training
- Same Carrier Class rugged reliability
- 40% gain in density per given footprint
- Notch visual indicating engagement feature



### SureNotch™ BNC and M-BNC

- Provides positive visual indication of correct plug installation
- Speeds inspection and problem diagnosis
- Straight and 90° versions



### Installation tools and training

- Complete tool kits for field installers
- Power and non-power cable strippers
- World Class BNC removal tool



### Rear Cross Connect Patch Cords

- NEBS qualified cable assemblies
- Fully tested for continuity and hi-pot
- Rapid response delivery on custom configurations



### Front patch cords with tracer

- WECo or miniWECo plug connector designs
- Available with tracer leads
- Designed to support patching in the CO
- Featuring gold barrels and insulated tip design



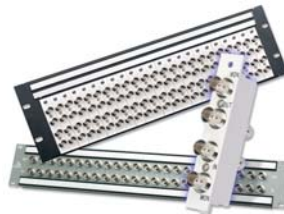
### Transition connector

- Interconnection for 735 to 735 cable as well as 734 to 735 cables
- Industry standard tooling and installation training
- Crimp/crimp design



### BNC and M-BNC cable jacks

- Same crimp/crimp Trompeter tooling and training
- NEBS certified, Carrier Class design
- Bulkhead and non-bulkhead versions



### POT panels

- Pass through jack/jack design enables discrete handoff hookups
- Point of termination “meet me” interconnect point
- Preferred by CLEC and ISP providers

## Broadcast Video Interconnectivity



### UPL2000 plugs

- HDTV capable. Full 1.485 Gbps, SMPTE 292M uncompressed signal levels.
- Digital signal designed
- Gold spring fingers and black coupling sleeve for superior electro magnetic conductivity
- True 75 ohm



### F to BNC adapter

- High frequency capable
- Enabling conversion from F connectors to BNC
- Best in Class choice for home theatre conversion to studio grade performance



### Carrier Class F connector

- Classic 3 piece construction
- Trompeter industry standard installation tooling and training
- High frequency capable
- Studio grade construction



### Video patchbays

- WECO and miniWECO versions available
- Normal thru and non-normal thru design
- Terminating and non-terminating versions
- Capable through HDTV uncompressed bandwidth frequency requirements

## RF Cable Assemblies



### 1553 Data Bus Harness

- Fan out constructions available
- Tapered RF connector end lengths available for superior cable management characteristics
- Each cable tested and certified



### Ultra-Low Loss Triax

- Double braid shielded for maximum signal ingress and egress conditions
- Signal leakage testing available
- Customer length and end terminations options
- Rapid delivery cycle times



### Coax Harness

- Multipin D sub to conventional RF connectors as shown
- Continuity tested 100%
- Hi Pot testing available
- 48 hour turn times on delivery



## Military/Aerospace Shielded RF Products

### TWINAX AND TRIAX PATCHING



- MIL-STD-1553 databus applications
- J158 patchjack products loaded into panels for easy rack mounting
- Triax interconnect cable assemblies
- Triaxial patch cords
- Military proven, the copper wireline of choice for shielded military communications shelter applications

### RF BULK CABLE



- MIL 1553 standard
- Triax cable versions
- Twinaxial cable versions
- Non-standard lengths available
- 75 ohm coaxial versions

### MILITARY/AEROSPACE CONNECTORS



- Hermetic versions available
- Space rated quality level available
- Custom designs
- Bulkhead and PCB mount designs
- Custom plating available for intermodulation suppression and harsh environments

## Emerson Network Power Connectivity Solutions

Trompeter  
5550 East McDowell Road  
Mesa, AZ 85215

Tel: 480.985.9000  
Fax: 480.985.0334

[www.trompeter.com](http://www.trompeter.com)

## About Emerson Network Power Connectivity Solutions

Emerson Network Power Connectivity Solutions, an Emerson business, serves the needs of wireless communications, telephony and data networks, CATV, security systems, health care and industrial facilities with a full spectrum of broadband copper and fiber optic connectivity products. For more information, visit [www.EmersonNetworkPower.com/Connectivity](http://www.EmersonNetworkPower.com/Connectivity).

## About Emerson

Emerson (NYSE: EMR), based in St. Louis, is a global leader in bringing technology and engineering together to provide innovative solutions to customers through its network power, process management, industrial automation, climate technologies, and appliance and tools businesses. For more information, visit [www.gotoemerson.com](http://www.gotoemerson.com).

## Emerson Network Power.

The global leader in enabling business-critical continuity.

- |                    |                                |                                |
|--------------------|--------------------------------|--------------------------------|
| ■ AC Power Systems | ■ Embedded Power               | ■ Outside Plant                |
| ■ Connectivity     | ■ Inbound Power                | ■ Precision Cooling            |
| ■ DC Power Systems | ■ Integrated Cabinet Solutions | ■ Site Monitoring and Services |

[www.EmersonNetworkPower.com](http://www.EmersonNetworkPower.com)